



**Cyfoeth
Naturiol**
Cymru
**Natural
Resources**
Wales

Proposed changes to Mawddach and Wnion Internal Drainage District boundary: A consultation

6th March 2017 to 17th April 2017

Introduction and purpose

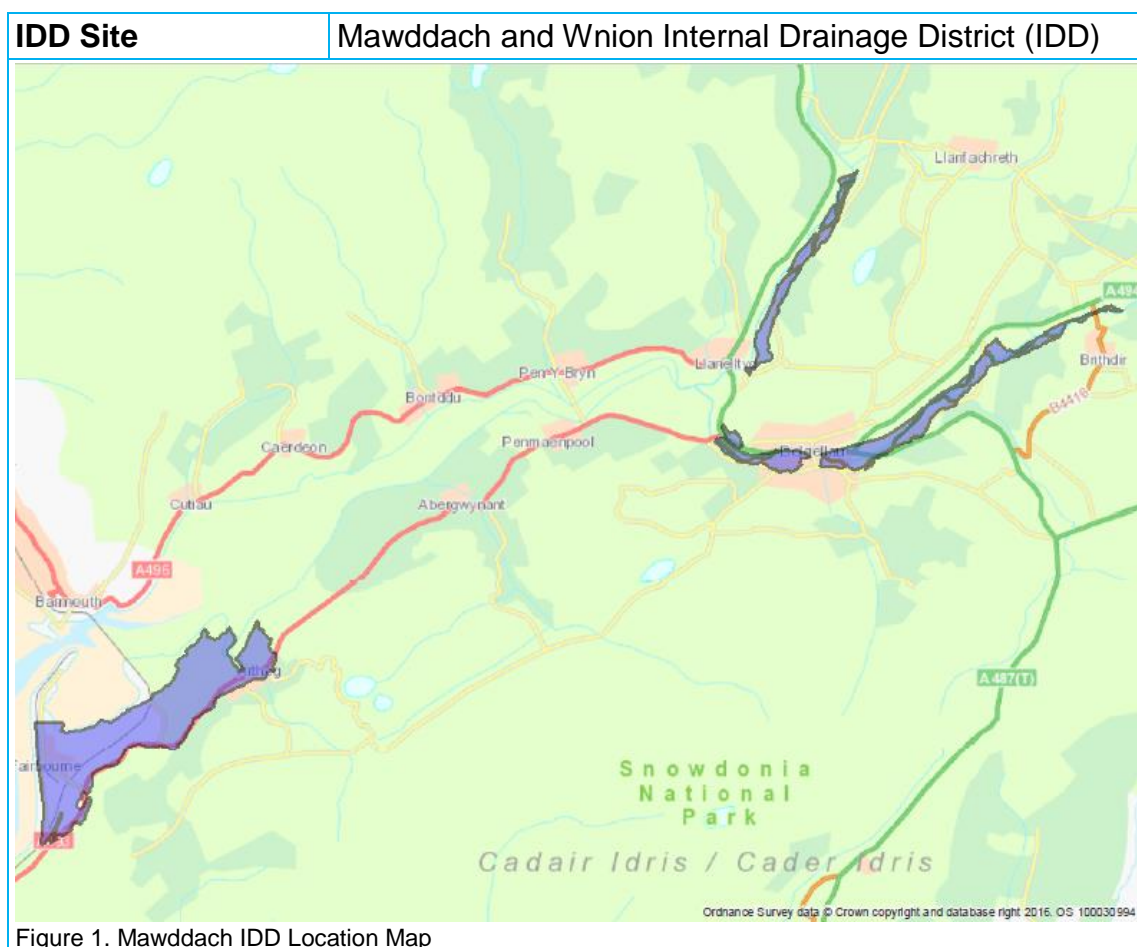
Internal Drainage Districts (IDD) are typically found in low-lying land where boundaries are determined by physical, not political attributes, and are operated in accordance with the Land Drainage Act (1991). Natural Resources Wales (NRW), the board who administer the IDD in Wales, is primarily responsible for managing water levels and reducing flood risk in IDD through the management of drainage channels, ordinary watercourses, pumping stations and control structures. This is possible through the payment of drainage rates from landowners within the IDD. Drainage rates are set annually by the Board of the IDD. Rates vary depending upon the quality and area of land within the IDD. In addition to the drainage rates, an annual payment is made to the Board by the Local Authority where the IDD is situated. This is called a Special Levy. This is also set annually by the Board.

Over time, the quality of land, or its use, may change and land parcels that once needed to be part of an IDD, may no longer be suitable, and vice versa. In light of this, NRW has conducted a review of the current boundaries of 13 IDDs¹ within Wales with a view to making revisions to those boundaries where appropriate. Proposed revisions to the boundaries were developed and are based on four principal factors: flooding, land drainage, biodiversity and locally sourced evidence and knowledge.

This consultation runs for a six-week period and is seeking your views on the proposed revision(s) to the IDD boundary.

¹ There are 14 IDDs in total within Wales but it was decided early in the review to exclude Borth Bog IDD from the review due to ongoing studies into the management of Cors Fochno UNESCO biosphere reserve, SSSI and SAC which is within this IDD.

Study Area



Factors for consideration

In order to make recommendations for boundary change, four principal factors were considered for each IDD.

- Land Drainage – how the hydrology, ditch network and maintenance of the IDD assets affects the drainage of the farm land.
- Flood risk – the extent and risk of flooding from watercourses, reservoirs and surface water within the IDD boundary was mapped and assessed for consideration alongside known historic flooding and flood defence assets. The purpose of using this factor was to determine which areas are affected by flooding which will need to be continued to be managed as part of the IDD.
- Biodiversity – the IDD was assessed in terms of biodiversity features and designation status using an appraisal process to determine whether certain protected areas (SSSIs, SACs, SPAs) should be part of the IDD or not. The purpose of this was to determine if the protected areas were being positively or negatively impacted by being part of the IDD. If a protected area was benefiting positively from being part of the IDD, it is recommended that it remains as part of the IDD. If being part of the IDD is negatively impacting on the protected area it could be recommended for exclusion from the IDD.
- Local knowledge – the information and data held through the preceding factors only goes part of the way toward the assessment of whether areas should be part of an IDD

or not and has been supplemented through local knowledge provided through Advisory Groups.

Proposed changes

After consideration of the factors outlined above, it is suggested that the following changes are made to the Mawddach and Wnion IDD boundary:

Description	Increase or decrease in IDD Area	Increase or decrease in Ha	Reason	Boundary review assessment factor
Remove IDD zone C from the IDD (Afon Wnion, Dolgellau)	Decrease	5.5 Ha	No IDD maintenance works within this zone	Land drainage
Remove IDD zone D from the IDD (Afon Wnion, Dolgellau)	Decrease	4.5 Ha	No IDD maintenance works within this zone	Land drainage
Remove IDD zone F from the IDD (Afon Wnion, upstream of Dolgellau)	Decrease	30 Ha	No IDD maintenance works within this zone	Land drainage
Remove IDD zone G from the IDD (Afon Wnion, upstream of Dolgellau)	Decrease	19.1 Ha	No IDD maintenance works within this zone	Land drainage
Remove IDD zone H from the IDD (Afon Wnion, upstream of Dolgellau)	Decrease	2.4 Ha	No IDD maintenance works within this zone	Land drainage
Remove IDD zone I from the IDD (Afon Wnion, upstream of Dolgellau)	Decrease	13 Ha	No IDD maintenance works within this zone	Land drainage
Remove IDD zone J from the IDD (Afon Wnion, upstream of Dolgellau)	Decrease	9.8 Ha	No IDD maintenance works within this zone	Land drainage
Remove IDD zone K from the IDD (Afon Wnion, upstream of Dolgellau)	Decrease	4.4 Ha	No IDD maintenance works within this zone	Land drainage

Remove IDD zone L from the IDD (Afon Wnion, upstream of Dolgellau)	Decrease	0.3 Ha	No IDD maintenance works within this zone	Land drainage
Remove IDD zone M from the IDD (Afon Wnion, upstream of Dolgellau)	Decrease	4.4 Ha	No IDD maintenance works within this zone	Land drainage
Remove IDD zone N from the IDD (Afon Wnion, upstream of Dolgellau)	Decrease	0.7 Ha	No IDD maintenance works within this zone	Land drainage
Remove IDD zone O from the IDD (Afon Wnion, upstream of Dolgellau)	Decrease	1.0 Ha	No IDD maintenance works within this zone	Land drainage
Remove IDD zone P from the IDD (Afon Mawddach, Llanlltyd)	Decrease	24.1 Ha	No IDD maintenance works within this zone	Land drainage
Remove IDD zone Q from the IDD (Afon Mawddach, Llanlltyd)	Decrease	6.6 Ha	No IDD maintenance works within this zone	Land drainage
Remove IDD zone R from the IDD (Afon Mawddach, Llanlltyd)	Decrease	7.0 Ha	No IDD maintenance works within this zone	Land drainage
Remove IDD zone S from the IDD (Afon Mawddach, Llanlltyd)	Decrease	3.6 Ha	No IDD maintenance works within this zone	Land drainage
Remove IDD zone T from the IDD (Afon Mawddach, Llanlltyd)	Decrease	1.9 Ha	No IDD maintenance works within this zone	Land drainage
Remove IDD zone U from the IDD (Afon Mawddach, Llanlltyd)	Decrease	1.5 Ha	No IDD maintenance works within this zone	Land drainage

For a more detailed version of the map on the next page, please visit the IDD boundary review consultation page on the NRW website where detailed maps are available for download.

IDD Site

Mawddach and Wnion Internal Drainage District (IDD)

Mawddach & Wnion IDD

-  Original IDD Boundary
-  Removed IDD Boundary
-  New IDD Boundary
-  Zoom Area

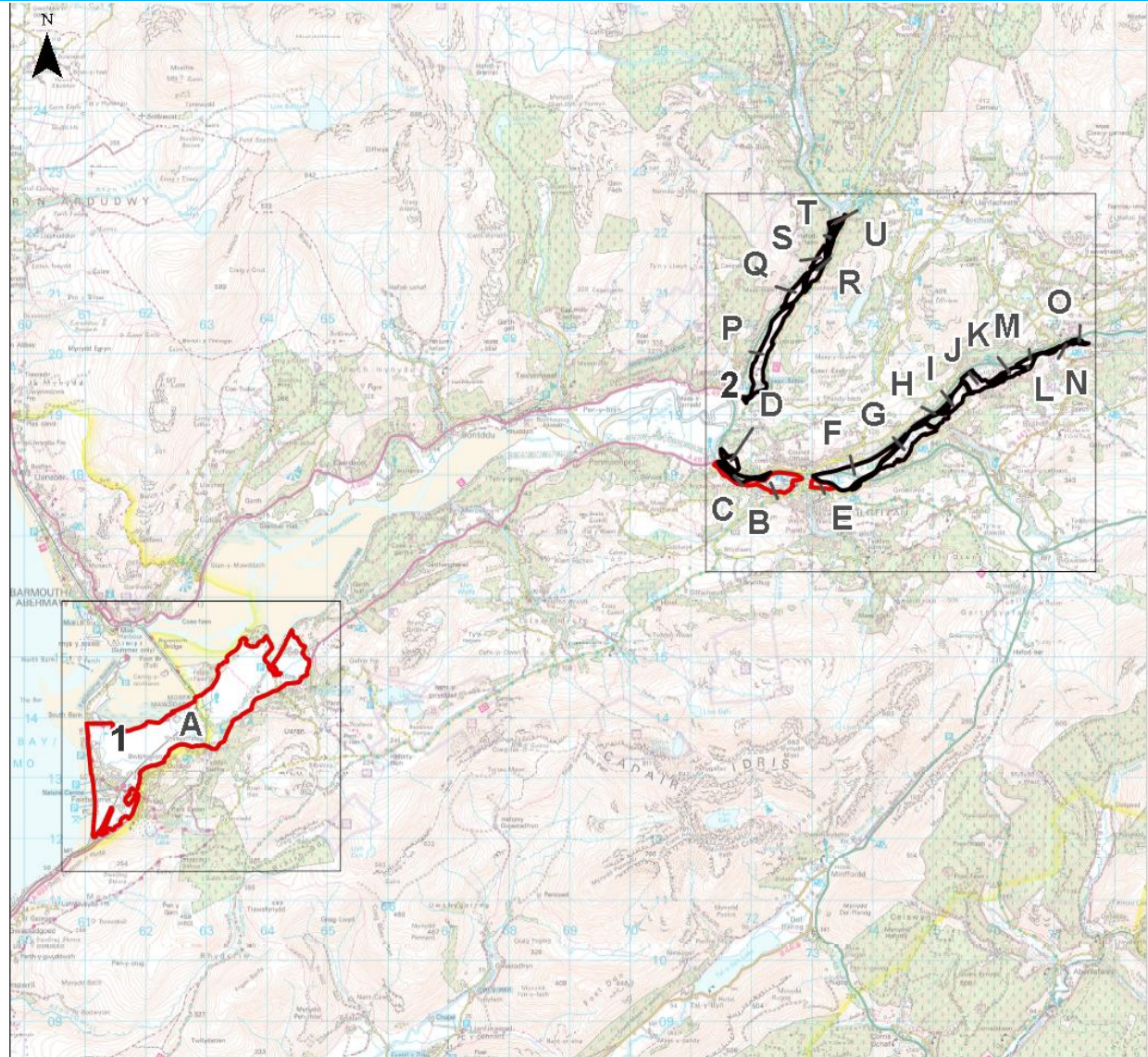


Figure 2. Mawddach and Wnion IDD current and proposed boundaries

Consultation questions

We are seeking your views on the proposed changes to the Mawddach and Wnion IDD. We ask that you consider and respond on the following points using the consultation response form available on the IDD boundary review consultation page on the NRW website:

1. Do you agree with the proposed changes to Mawddach and Wnion IDD?
Yes / No
2. If you answered No to question 1, which factor is this based on:
Flood risk
Land drainage
Biodiversity
Local knowledge
Other

Please explain your reason
3. Are there any additional changes that you feel should be considered?
Yes / No
4. If you answered yes to question 3, please explain in detail and provide supporting information (maps, photos, etc) where possible.
5. Do you possess any information that might be of relevance to the proposed boundary changes?
Yes / No
6. If you answered yes to the question above, please explain in detail and provide supporting information (maps, photos, etc) where possible.

Who can respond to this consultation?

This is a public consultation which is open to any individual or organisation to respond to.

Printed versions of any of the documents related to this consultation are available on request from NRW by emailing IDDboundarychange@naturalresourceswales.gov.uk or by phoning the NRW Customer Care Centre on 0300 065 3000.

How to respond to the consultation

The IDD Boundary Review Consultation response form should be used for consultation responses. This is available for download from the IDD boundary review consultation page on the NRW website

Responses can be submitted via email or hard copy and may be in English or in Welsh.

Completed consultation response forms can be emailed to:

IDDboundarychange@naturalresourceswales.gov.uk

Or sent via post to:

IDD Boundary Review
Natural Resources Wales
Maes Y Fynnon
Penrhosgarnedd
Bangor
Gwynedd
LL57 2DW.

All responses to this consultation must be received by **5pm 17th April 2017** at the latest. Any responses received after that date may not be taken into account.

If you require any additional information on anything included within this consultation document, please use the above addresses to contact us.

Publishing our consultation results

We aim to publish our response to the IDD boundary review consultation in June 2017. It will include a summary of comments and queries we received in the consultation response forms and will outline our recommendations which will take these into account. The report will be available on our website and circulated to all consultees.

If you have any questions or complaints about the way this consultation has been carried out, please use the contact details above.



**Cyfoeth
Naturiol**
Cymru
**Natural
Resources**
Wales

Published by:
Natural Resources Wales
Cambria House
29 Newport Road
Cardiff
CF24 0TP

0300 065 3000 (Mon-Fri, 9am - 5pm)

enquiries@naturalresourceswales.gov.uk
www.naturalresourceswales.gov.uk

© Natural Resources Wales

All rights reserved. This document may be reproduced with prior permission of
Natural Resources Wales