

North Anglesey Marine /
Gogledd Môn Forol

Tudalen Page **1 / 3** Côd Safle y GE
EC Site Code

 Ardal Cadwraeth Arbennig dan ystyriaeth (ACAy)
Possible Special Area of Conservation (pSAC)

 Ardaloedd Cadwraeth Arbennig Eraill (ACA)
Other Special Areas of Conservation (SAC)

Arwynebedd cyfan **324,895.02 ha** G/N
Total area
Hydred **-4.8267 dec deg**
Longitude
Lledred **53.5661 dec deg**
Latitude

N.G. Mae'r ffigurau Lledred/Hydred i gyd wedi deillio o System Geodesig y Byd 84 (WGS 84)

N.B. All Latitude/Longitude figures have been derived from World Geodetic System 84 (WGS 84).

Taftuniad map: Y Grid Cenedlaethol Prydeinig
Projection: **British National Grid**

Rhif diweddaraf **1** 14/01/2016
Version number

Graddfa / Scale **1:325,000**
0 2 4 8
Kilometers

Noder: Data wedi ei gipio ar raddfa 1:2,500, rhoddwyd ar raddfa 1:325,000. Mae mapiau graddfa-fawr swyddodol ar gael gan CNC. Mae graddfa'r map yn cywir pan argraffu yn A3.

Note: Data captured at 1:2500 scale, placed on 1:325,000 scale. A definitive large scale map is available on request from NRW. The scale of this map is only correct when printed out at A3.

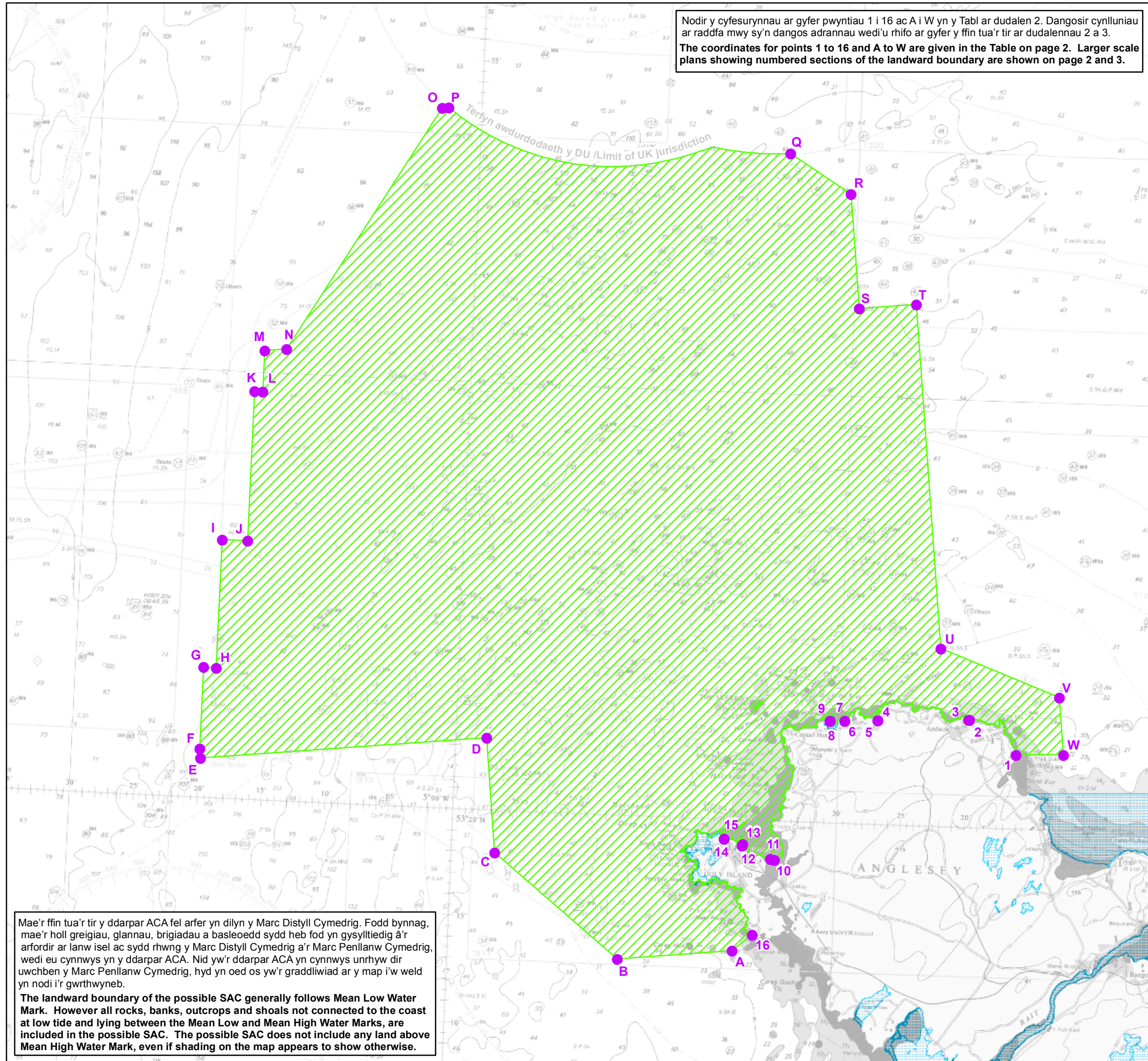
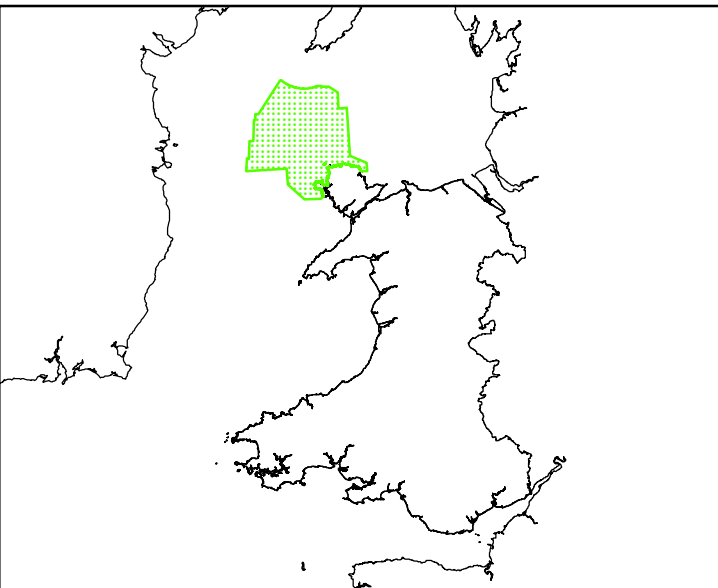
Noder: Gall y ffin newid lle mae'n dilyn llinell Marc Penllanw Cymedrig ac/ neu llinell Marc Distyll Cymedrig.

Note: Where the boundary follows the lines of Mean High and/or Mean Low Water Marks it is subject to change.

© Hawlfraint y Goron a hawliau cronfa ddata. 2015. Arolwg Ordnans. 100019741
© Crown Copyright and database rights. 2015. Ordnance Survey. 100019741

© British Crown and OceanWise Ltd, 2015. Cedwir pob hawl. Rhif Trwydded. EK001-20120402.
© British Crown and OceanWise Ltd, 2015. All rights reserved. License No. EK001-20120402.

RHAID PEIDIO Â DEFNYDDIO HWN AR GYFER LLYWIO NOT TO BE USED FOR NAVIGATION




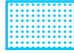
Nodir y cyfesurynnau ar gyfer pwyntiau 1 i 16 ac A i W yn y Tabl ar dudalen 2. Dangosir cynlluniau ar raddfa mwy sy'n dangos adrannau wedi'u rhifo ar gyfer y ffin tua'r tir ar dudalennau 2 a 3.
The coordinates for points 1 to 16 and A to W are given in the Table on page 2. Larger scale plans showing numbered sections of the landward boundary are shown on page 2 and 3.

Mae'r ffin tua'r tir y ddarpar ACA fel arfer yn dilyn y Marc Distyll Cymedrig. Fodd bynnag, mae'r holl greigiau, glannau, brigadau a basleoedd sydd heb fod yn gysylltiedig â'r arfordir ar lanw isel ac sydd rhwng y Marc Distyll Cymedrig a'r Marc Penllanw Cymedrig, wedi eu cynnwys yn y ddarpar ACA. Nid yw'r ddarpar ACA yn cynnwys unrhyw dir uwchben y Marc Penllanw Cymedrig, hyd yn oed os yw'r graddliwiad ar y map i'w weld yn nodi i'r gwrthwyneb.
The landward boundary of the possible SAC generally follows Mean Low Water Mark. However all rocks, banks, outcrops and shoals not connected to the coast at low tide and lying between the Mean Low and Mean High Water Marks, are included in the possible SAC. The possible SAC does not include any land above Mean High Water Mark, even if shading on the map appears to show otherwise.

North Anglesey Marine / Gogledd Môn Forol

Ardal Cadwraeth Arbennig dan ystyriaeth (AGAy)
possible Special Area of Conservation (pSAC)

Pwynt	Hydred	Lledred	X	Y
Point	Longitude	Latitude	X	Y
1	-4.2668	53.3907	249,274.57	390,624.52
2	-4.3287	53.4166	245,258.37	393,641.28
3	-4.3304	53.4165	245,142.63	393,638.21
4	-4.4487	53.4140	237,274.04	393,620.07
5	-4.4489	53.4140	237,261.45	393,617.57
6	-4.4919	53.4125	234,399.98	393,554.93
7	-4.4920	53.4125	234,390.98	393,555.33
8	-4.5110	53.4123	233,126.30	393,572.90
9	-4.5110	53.4123	233,123.90	393,574.30
10	-4.5773	53.3022	228,282.00	381,493.00
11	-4.5825	53.3029	227,933.54	381,577.20
12	-4.6196	53.3125	225,500.43	382,731.97
13	-4.6189	53.3137	225,552.49	382,864.39
14	-4.6438	53.3174	223,915.63	383,342.35
15	-4.6438	53.3174	223,913.94	383,346.66
16	-4.6024	53.2431	226,368.03	374,981.65
A	-4.6282	53.2302	224,593.41	373,601.66
B	-4.7767	53.2205	214,645.96	372,902.99
C	-4.9417	53.2997	203,995.81	382,150.24
D	-4.9583	53.3887	203,300.43	392,096.74
E	-5.3303	53.3632	178,437.52	390,346.15
F	-5.3318	53.3705	178,380.09	391,158.89
G	-5.3318	53.4342	178,711.43	398,244.95
H	-5.3151	53.4342	179,817.97	398,193.31
I	-5.3151	53.5342	180,335.80	409,311.71
J	-5.2818	53.5342	182,543.83	409,209.33
K	-5.2818	53.6509	183,142.73	422,180.90
L	-5.2708	53.6509	183,869.35	422,147.38
M	-5.2708	53.6830	184,034.05	425,723.27
N	-5.2422	53.6850	185,926.30	425,853.60
O	-5.0516	53.8784	199,436.73	446,800.38
P	-5.0428	53.8789	200,014.32	446,841.30
Q	-4.5893	53.8536	229,708.96	442,836.44
R	-4.5077	53.8237	234,957.24	439,318.13
S	-4.4918	53.7346	235,660.83	429,369.22
T	-4.4166	53.7393	240,635.39	429,720.81
U	-4.3696	53.4718	242,741.35	399,872.71
V	-4.2125	53.4364	253,041.47	395,598.38
W	-4.2050	53.3918	253,391.57	390,623.26

-  Ardal Cadwraeth Arbennig dan ystyriaeth (AGAy)
possible Special Area of Conservation (pSAC)
-  Ardaloedd Cadwraeth Arbennig Eraill (ACA)
Other Special Areas of Conservation (SAC)

Dangosir y pwyntiau wedi'u rhifo yn y mapiau mewnol canlynol ar y prif fap ar dudalen 1.
The numbered points in the following inset maps are shown on the main map on page 1.

Ac eithrio pan nodir yn wahanol, mae ffin yr ACA bosibl yn dilyn y Marc Distyll Cymedrig rhwng y pwyntiau canlynol:

1 a 2
3 a 4
5 a 6
7 a 8
9 a 10
11 a 12
13 a 14
15 a 16.

Except where otherwise shown, the boundary of the possible SAC follows Mean Low Water Mark between the following points:

1 and 2
3 and 4
5 and 6
7 and 8
9 and 10
11 and 12
13 and 14
15 and 16.

