



# Applying the Countryside Code role-play



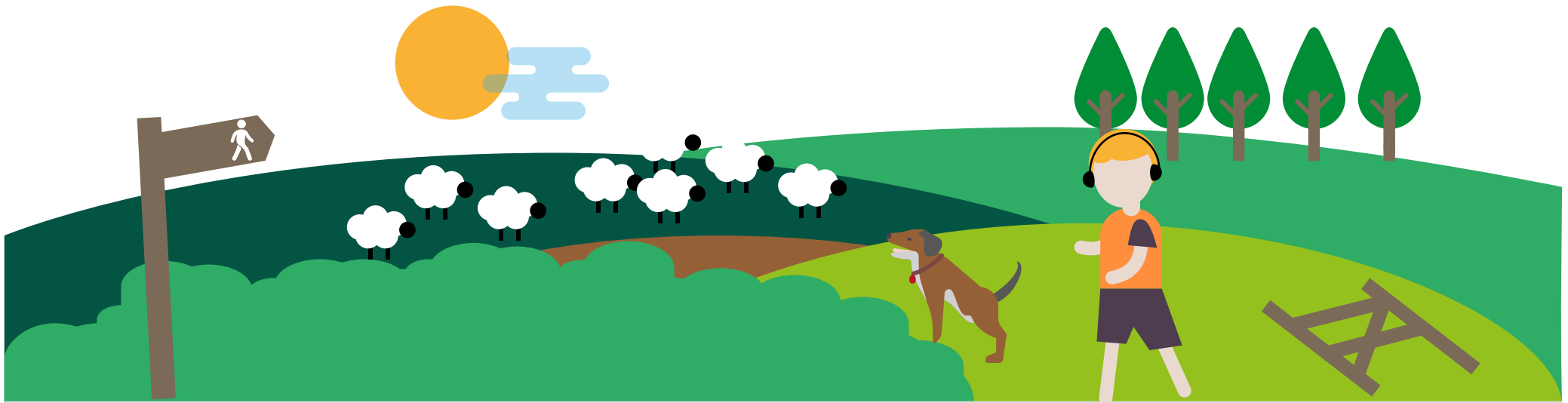
## Setting the scene

You are attending a public meeting in the village hall of a small Welsh village.

The surrounding heather moorland is of great importance and contains a variety of plant species and wildlife.

The meeting has been called by local landowners, who are concerned about the problems that some visitors are causing on the land.

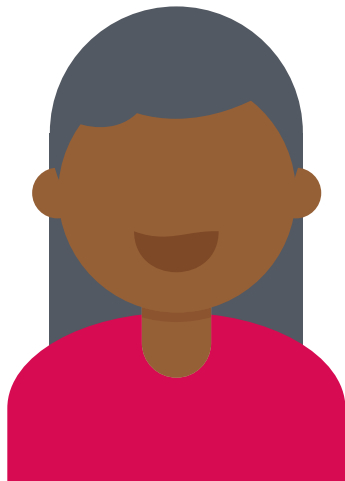
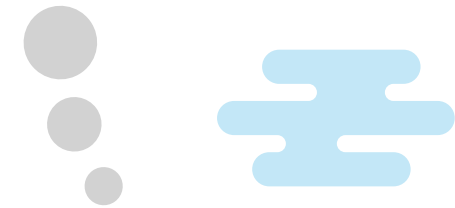
**\*If you are printing these resources to use with learners, then only pages 2-4 need to be printed.**





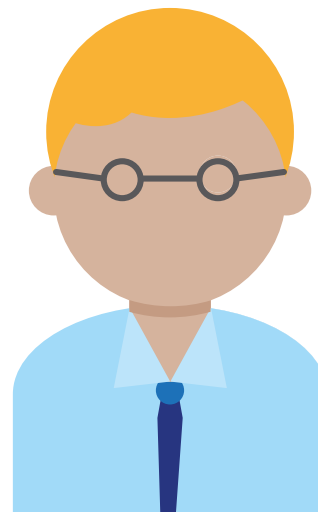
## Community Councillor

“My role is to keep the debate constructive and to give everyone a chance to air their views. I have to ask the landowners to express their concerns and then ask others to respond and make their own points.”



## Council clerk

“It is my responsibility to take minutes of the meeting and to feedback key points at the end of the meeting. I must remain impartial.”



## Landowners

“We are very worried and angry as there have been two cases of sheep worrying in the past two weeks. A farmer we know has had three sheep killed.

Walkers have left gates open, and cattle have got out onto the road, causing a traffic holdup and it took a long time to get them back into the field.

Broken bottles and rubbish have been dropped on the moorland and visitors have parked in gateways stopping us getting access to the land.”

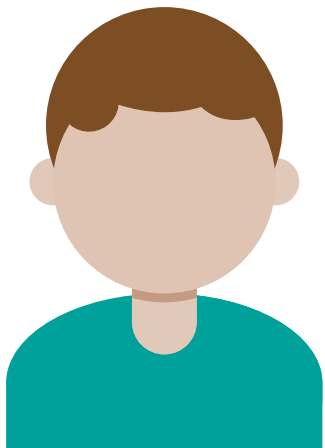




## Member of the Ramblers

“I am concerned because walkers have reported that they have been chased on the moorland by cattle whilst crossing a public right of way.

The gates are broken on some paths and very difficult to operate. Some believe an easier alternative is required.”



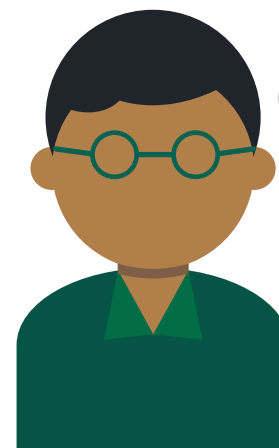
## Family of walkers

“We are very upset as a farmer shouted at us because our dog was off the lead and running around amongst the sheep. We think our dog is very friendly and gentle and didn’t pose a threat to the sheep in the field, he just wanted to play.”



## Moorland ecologist

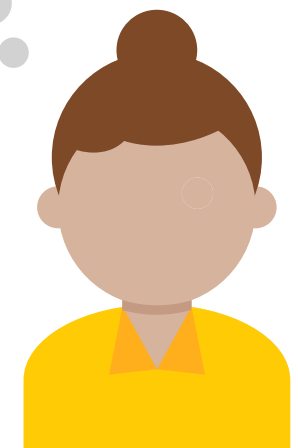
“I am carrying out research on the restoration of the moorland and believe we need to protect the moorland at all cost,. Too many visitors can be a serious threat to this fragile ecosystem and fires are a real problem. Cattle grazing on a moorland can be a good thing as long as it isn’t too intensive. Managing the moorland needs to be balanced; in my opinion it is the moorland species that must be protected such as the marsh fritillary butterfly.”



## Village shop manager

“I am really pleased that more visitors are coming to the village and using the shop as business has increased.

I have started serving teas and coffees to them and also, I stock walking guides and local information to help them. I am worried that the views of some of the landowners will put visitors off coming here.”



## Rights of Way officer

“My job is to ensure the rights of way are properly waymarked and unobstructed. I also ensure that access points including gates and stiles are in good condition and useable. I work closely with landowners and land managers and can provide materials to improve access points.

Sometimes I need to take action if landowners have obstructed paths.”



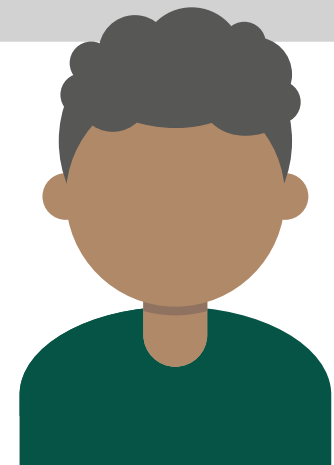
## Young adult visitor

“It is my right to go and wild camp here and party with my friends. Why should I pick up the litter when I leave? I am not doing any harm coming here, it is my right to come to the countryside.”



## Countryside Ranger

“My job is to work with the landowners and land managers to conserve the heather moorland and enhance its biodiversity. I also deal with visitors, explaining why the moorland is so important and encourage them to behave responsibly. There have been fires on the moorland in recent weeks caused by visitors throwing cigarette butts onto the dry grass. This has caused considerable damage, and the fires were hard to put out. I find the Countryside Code useful because I can talk to visitors about it and encourage them to follow it so everyone can enjoy the countryside.”



**Learning in, learning about, and learning for the natural environment.**

**Looking for more learning resources, information and data?**

Please contact: [education@naturalresourceswales.gov.uk](mailto:education@naturalresourceswales.gov.uk) or go to <https://naturalresources.wales/learning>

Alternative format; large print or another language, please contact: [enquiries@naturalresourceswales.gov.uk](mailto:enquiries@naturalresourceswales.gov.uk) 0300 065 3000